

Ice Worlds: A GIANT SCREEN FILM AND OUTREACH PROJECT

| AWARD # DRL-2116070

Community Partners:

Athena Copenhaver, Study of Environmental Arctic Change (SEARCH), aecopenhaver@Alaska.edu

Tribal Youth Media

Northwestern University Center for Native American and Indigenous Research

PI: Deborah Raksany, Giant Screen Films, draksany@gsfilms.com

Co-PIs: Andy Wood, Giant Screen Films, awood@gsfilms.com

Dr. Karen Elinich, Independent Researcher, kelinich@yahoo.com

Dr. Patty Loew, Northwestern University, patricia.loew@northwestern.edu

Tribalyouthmedia.org

Iceworldfilm.com

Project Description

Ice Worlds: A Giant Screen Film and Outreach Project is a documentary media project that invites public audiences to explore their connections to the Earth's changing climate and their own identities as changemakers. In collaboration with an NSF-funded research project, we are working with Indigenous communities and scientists in the Arctic to co-produce stories about environmental change for a giant screen film. We also worked with Native youth to produce climate documentaries in their communities.

Key Achievements & Findings

- We completed 4 youth produced climate documentaries in partnership with Native communities and used an Indigenous framework to evaluate the outcomes.
- Documentary filmmaking in a cultural context can serve as an effective mechanism for collective identity work and community engagement with Native youth—particularly with respect to STEM identity—thereby serving as an integral part of positive development.
- This kind of collaboration is challenging but worthwhile!

Audience & Settings

Audiences:

- Lifelong learners in museums and science centers, with a focus on middle school aged kids
- Middle school youth in US Indigenous communities
- Informal science educators

Disciplinary area:

Climate science

Science communication

Learning environment:

- Museums and science centers
- Remote communities
- Native and tribal lands

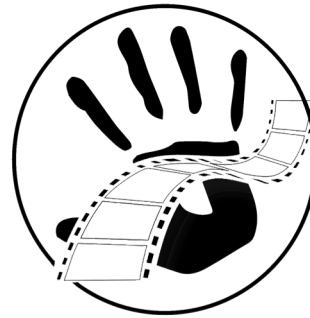
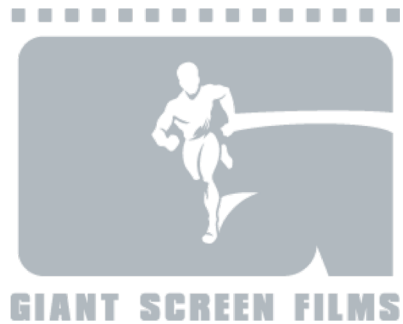
Access and Inclusion

By using culturally appropriate educational methods, we hope to cultivate a new generation of Native youth science storytellers and land stewards. We are also working to change our approach to producing science knowledge and stories to elevate Indigenous perspectives and voices.



Ice Worlds: A GIANT SCREEN FILM AND OUTREACH PROJECT

| AWARD # DRL-2116070



TRIBAL
YOUTH
MEDIA



WORKSHOP MODEL

“A lot of indigenous knowledge hasn’t always been respected, or we haven’t been given the credit that we should have throughout history as far as... our knowledge of science. And I really think that this [workshop] helps to make that more clear and acknowledge that knowledge.”

—TYM Community Stakeholder

- Led by their communities, student filmmakers researched and developed documentaries about cultural climate issues on tribal lands
- Documentaries address challenges honestly and focus on community strengths, not deficiencies
- Stories emphasize traditional knowledge and solutions
- Elders and traditional knowledge holders partnered with Native scientists to mentor youth filmmakers



Four Directions

- North (Mashkiiizibii –Bad River Ojibwe)
- South (Poarch Band of Creek Indians)
- East (Onondaga Nation)
- West (Quinault Indian Nation)



Four Elements

- Water — Quinault
- Earth — Onondaga
- Fire — Poarch Creeks
- Sky — Ojibwe



Filmmakers are collaborating with researchers and Indigenous experts on Saint Lawrence Island to share stories of change

Youth filmmakers produced documentaries about cultural and climate issues on their Native lands